

READING THE FOREST

As you stroll through the woods at Fieldstone Farm, take note of the size and diversity of trees you see. Are the diameters of the trunks measured in inches or feet? The forest you see now reflects land management decisions made decades ago. Closer to the old farmhouse, the forest is substantially younger – this part of the preserve was used as a hayfield to provide forage for a herd of elk in the 1920s.



Ray Roper photo

THE OLD FARMHOUSE

Carl Tielenius, a wealthy New York City merchant, built the farmhouse for his daughter in the 1910s. The house burned down in the 1960s. There is a spring that bubbles up behind the house. The water flows at 52 degrees year-round down through the former swimming pool to the ponds and to Tank Creek. This area remains unfrozen throughout the year, which attracts a variety of wildlife.



Hannable Parrish photo

POLLINATOR HABITAT

The old-field habitat around the farmhouse contains species of goldenrods, wild bergamot and common milkweed (*pictured above*), among other wildflowers. On foraging trips for pollen and nectar, bees, butterflies, and other insects pollinate these plants. This field has remained un-mowed for several years, allowing fallow grasses and wildflowers to bloom.



Pocono Heritage Land Trust

1539 Cherry Lane Road
East Stroudsburg, PA 18301
www.phlt.org
570-424-1514

Founded in 1984, Pocono Heritage Land Trust is a non-profit organization dedicated to protecting the natural heritage of the Pocono Mountains region by conserving land and inspiring people to care for, enjoy, and explore their natural world.



Fieldstone Farm

Tank Creek Nature Preserve



Bob Hare photo

Ruins of an early 20th-century home at Fieldstone Farm.

THINGS TO DO HERE:
hunting, fishing and hiking

Fieldstone Farm Tank Creek Nature Preserve



Trailhead address: 512 Devils Hole Road, Cresco, PA 18326

White trail (1 mile)

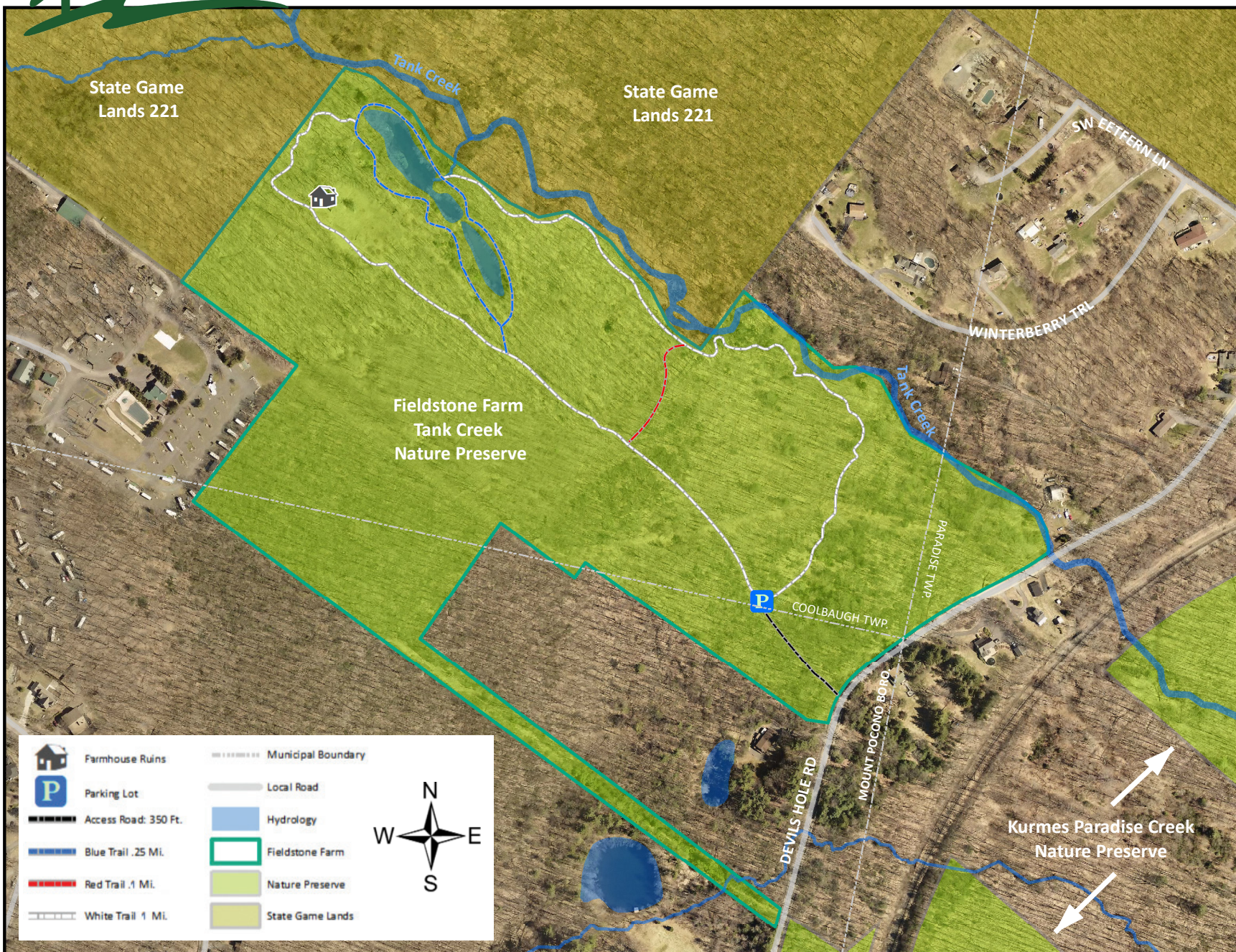
The white trail loops around the preserve, adjacent to Tank Creek. In the late 19th century, a portion of Tank Creek's flow was diverted to a cistern south of Devil's Hole Road. This cistern was used to top off the tanks of passing steam locomotives. Try to find remains of the old dam and water pipes in Tank Creek.

Red trail (0.1 mile)

The red trail follows an old stone wall, which was used to delineate an historic property boundary. Remnant fields and old stone walls are a reminder of our agrarian past. This trail cuts back to the white trail and shortens the loop.

Blue trail (0.25 mile)

The blue trail loops around two manmade ponds and the remains of a spring-fed swimming pool. As you walk along the trail, you will find trees cut down with the characteristic tooth marks of the beaver. Look for additional signs of beaver activity and a bank beaver lodge as you hike along this trail.



Hunting is permitted at Fieldstone Farm Tank Creek Nature Preserve in accordance with Pennsylvania Game Commission regulations (www.pgc.pa.gov).